

HEXAGONAL ROLLS SCREEN “E-SCREEN”

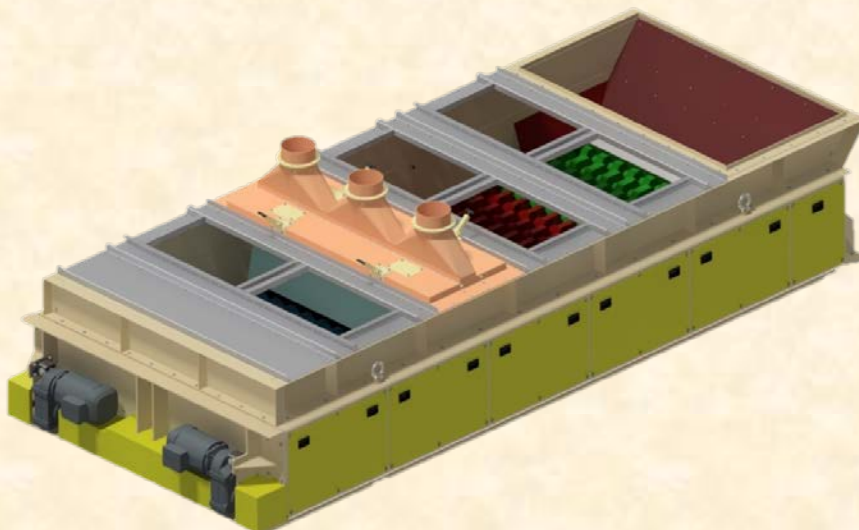
The roller screens, model "E-SCREEN" BULLMECH, are designed for the primary screening of various types of product and allow to obtain homogeneous fractions that can be started to subsequent production processes.

Roller screens are mainly used on materials such as compost, wood, biomass, metals, tires, glass, car fluff, cdr/css, construction and demolition, ash, aggregates.

The construction peculiarity of the rollers allows the screening of material containing even long and filamentous parts without the latter being able to twist, making optimal separation possible and significantly reducing machine downtime.

Specifications:

- Different types of rollers to obtain up to four fractions with a single machine;
- Screening range from 6 to 350mm;
- Double motorization for optimal torque distribution;
- Manual or motorized flaps for fraction adjustment;
- Integrated suction system for the removal of light pollutants such as paper, nylon, textile fibers, etc.; (optional)
- Rollers made of wear-resistant fillers with carbide coatings, to ensure maximum durability even with particularly abrasive materials;
- Reduced energy and maintenance costs;
- Available on request with fire extinguishing system and explosion protection system;
- Installation also in ATEX zone 22 classified environments;



CODE DEFINITION

MODEL		-	Lenght [cm]				-	Width [cm]				-	Equipment compatible with ATEX 2014/34/EU [a]			
E	S	-	6	0	0	0	-	2	2	0	0	-	A	T	2	2

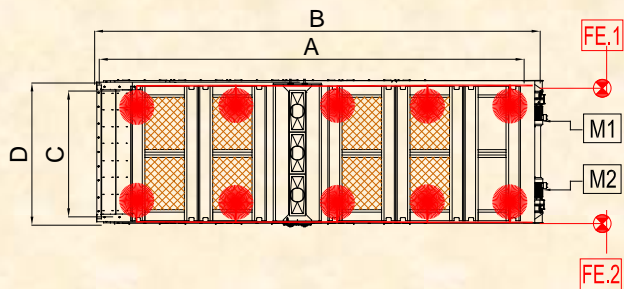
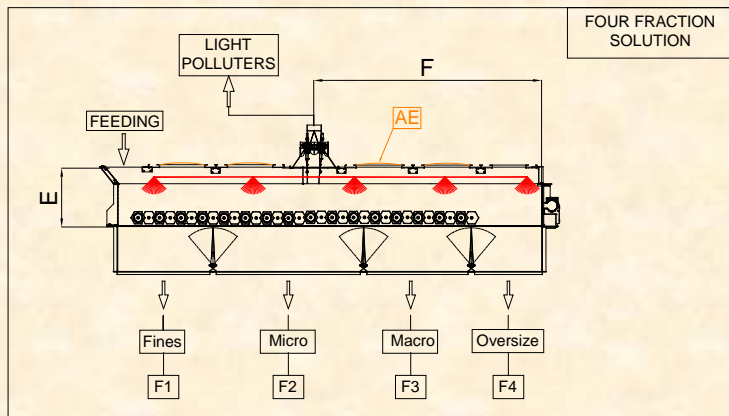
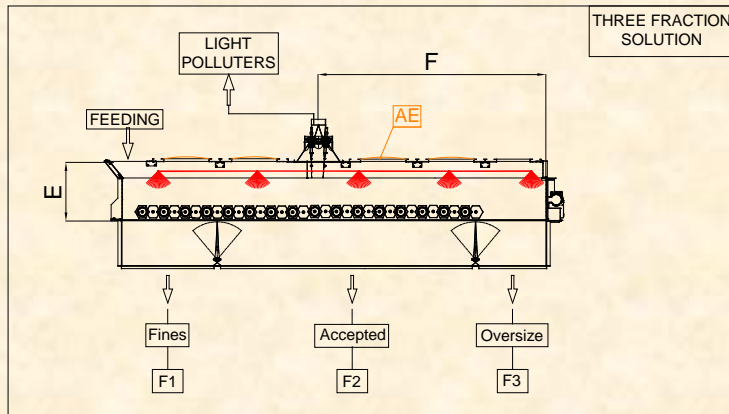
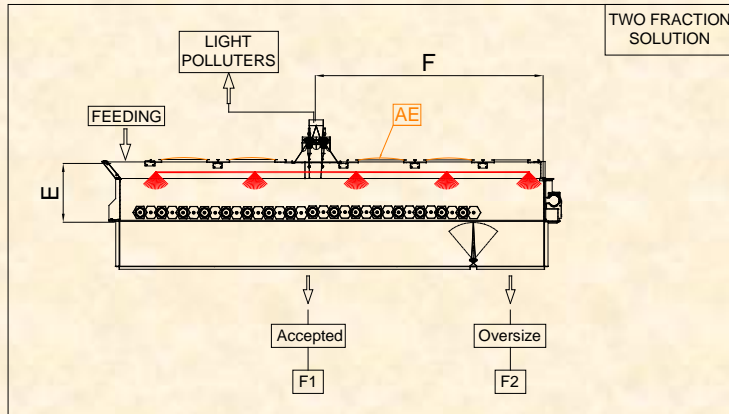
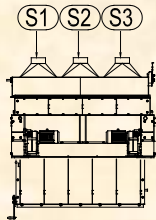
- [a]: AT21 = External area classified ATEX zone 21
 AT22 = External area classified ATEX zone 22
 = Unclassified outdoor area (Omit)

MODEL	Internal lenght	Internal width	Maximum capacity	N° max of rollers	Power	Weight
	[mm]	[mm]	[m ³ /h]	[Pz]	[Kw]	[kg]
ES-3.000-1.000	3.000	1.000	In agreement with the type of material and the number of rollers	10	2 x 5,5	Depending on the number of rollers and the machine configuration
ES-3.500-1.000	3.500	1.000		12	2 x 5,5	
ES-4.000-1.000	4.000	1.000		15	2 x 5,5	
ES-4.500-1.000	4.500	1.000		18	2 x 5,5	
ES-5.000-1.000	5.000	1.000		20	2 x 7,5	
ES-3.000-1.600	3.000	1.600		10	2 x 5,5	
ES-3.500-1.600	3.500	1.600		12	2 x 5,5	
ES-4.000-1.600	4.000	1.600		15	2 x 5,5	
ES-4.500-1.600	4.500	1.600		18	2 x 5,5	
ES-5.000-1.600	5.000	1.600		20	2 x 7,5	
ES-5.500-1.600	5.500	1.600		22	2 x 7,5	
ES-6.000-1.600	6.000	1.600		25	2 x 9,2	
ES-6.500-1.600	6.500	1.600		28	2 x 9,2	
ES-7.000-1.600	7.000	1.600		30	2 x 11,0	
ES-7.500-1.600	7.500	1.600		32	2 x 11,0	
ES-8.000-1.600	8.000	1.600		35	2 x 11,0	
ES-3.000-2.200	3.000	2.200		10	2 x 5,5	
ES-3.500-2.200	3.500	2.200		12	2 x 5,5	
ES-4.000-2.200	4.000	2.200		15	2 x 5,5	
ES-4.500-2.200	4.500	2.200		18	2 x 5,5	
ES-5.000-2.200	5.000	2.200		20	2 x 7,5	
ES-5.500-2.200	5.500	2.200		22	2 x 7,5	
ES-6.000-2.200	6.000	2.200		25	2 x 9,2	
ES-6.500-2.200	6.500	2.200		28	2 x 9,2	
ES-7.000-2.200	7.000	2.200		30	2 x 11,0	
ES-7.500-2.200	7.500	2.200		32	2 x 11,0	
ES-8.000-2.200	8.000	2.200		35	2 x 11,0	

(*) The number of rollers is determined according to the material to be processed and the required flow rate

Example for order: **Contact Bullmech for the definition of the Machine**

HEXAGONAL ROLLS SCREEN "E-SCREEN" - DATA SHEET -



HEXAGONAL ROLLS SCREEN “E-SCREEN” - DATA SHEET -

MODEL	GENERAL DIMENSION						LIGHT POLLUTANT ASPIRATION (*)	POWER INSTALLED	FIREFIGHTING SYSTEM (**)	ANTI-EXPLOSION PANELS (***)	NUMBER OF FRACTION
	[mm]										
	A	B	C	D	E	F	S1+S2+S3	M1-M2	FE.1 + FE.2	AE	
ES-3.000-1.000	3.000	3.450	1.000	1.370	1.035	Depending on the layout and material covered	3 x 2.000	2 x 5,5	336	4	Configurable fractions from 2 to 4 according to request
ES-3.500-1.000	3.500	3.950	1.000	1.370	1.035		3 x 2.000	2 x 5,5	336	4	
ES-4.000-1.000	4.000	4.450	1.000	1.370	1.035		3 x 2.000	2 x 5,5	336	4	
ES-4.500-1.000	4.500	4.950	1.000	1.370	1.035		3 x 3.000	2 x 5,5	448	6	
ES-5.000-1.000	5.000	5.450	1.000	1.370	1.035		3 x 3.000	2 x 7,5	448	6	
ES-3.000-1.600	3.000	3.450	1.600	1.960	1.035		3 x 2.000	2 x 5,5	336	4	
ES-3.500-1.600	3.500	3.950	1.600	1.960	1.035		3 x 2.000	2 x 5,5	336	4	
ES-4.000-1.600	4.000	4.450	1.600	1.960	1.035		3 x 2.000	2 x 5,5	336	4	
ES-4.500-1.600	4.500	4.950	1.600	1.960	1.035		3 x 2.000	2 x 5,5	448	6	
ES-5.000-1.600	5.000	5.450	1.600	1.960	1.035		3 x 3.000	2 x 7,5	448	6	
ES-5.500-1.600	5.500	5.950	1.600	1.960	1.035		3 x 3.000	2 x 7,5	448	6	
ES-6.000-1.600	6.000	6.450	1.600	1.960	1.035		3 x 3.000	2 x 9,2	448	6	
ES-6.500-1.600	6.500	6.950	1.600	1.960	1.035		3 x 3.000	2 x 9,2	560	8	
ES-7.000-1.600	7.000	7.450	1.600	1.960	1.035		3 x 3.000	2 x 11,0	560	8	
ES-7.500-1.600	7.500	7.950	1.600	1.960	1.035		3 x 3.000	2 x 11,0	560	8	
ES-8.000-1.600	8.000	8.450	1.600	1.960	1.035		3 x 3.000	2 x 11,0	560	8	
ES-3.000-2.200	3.000	3.450	2.200	2.570	1.035		3 x 2.000	2 x 5,5	336	4	
ES-3.500-2.200	3.500	3.950	2.200	2.570	1.035		3 x 2.000	2 x 5,5	336	4	
ES-4.000-2.200	4.000	4.450	2.200	2.570	1.035		3 x 2.000	2 x 5,5	336	4	
ES-4.500-2.200	4.500	4.950	2.200	2.570	1.035		3 x 2.000	2 x 5,5	448	6	
ES-5.000-2.200	5.000	5.450	2.200	2.570	1.035		3 x 3.000	2 x 7,5	448	6	
ES-5.500-2.200	5.500	5.950	2.200	2.570	1.035		3 x 3.000	2 x 7,5	448	6	
ES-6.000-2.200	6.000	6.450	2.200	2.570	1.035		3 x 3.000	2 x 9,2	448	6	
ES-6.500-2.200	6.500	6.950	2.200	2.570	1.035		3 x 3.000	2 x 9,2	560	8	
ES-7.000-2.200	7.000	7.450	2.200	2.570	1.035		3 x 3.000	2 x 11,0	560	8	
ES-7.500-2.200	7.500	7.950	2.200	2.570	1.035		3 x 3.000	2 x 11,0	560	8	
ES-8.000-2.200	8.000	8.450	2.200	2.570	1.035		3 x 3.000	2 x 11,0	560	8	

(*) Suction of light pollutants is optional and requires a cyclone for settling the sucked material.

(**) Optional explosion protection system for dry material.

(***) Optional explosion protection for dry material with 0.5 m² panels.