

SCREW EXTRACTION MODEL "SCE"

BULLMECH "SCE" screw extraction are designed according to the specific needs of the customer. Each machine is sized according to the material to be extraction and designed according to the planned plant layout.

The special construction of the head, with emergency supports with specific dust and loop seal, allow the machines to be installed even in dusty and potentially explosive areas as required by the ATEX regulations.

The quality of the components used and the careful design allow BULLMECH screw to work in continuous cycle systems ensuring maximum reliability and minimum operating costs.

The BULLMECH screw can be made of carbon steel, HARDOX wear-resistant steel or AISI 304 and / or AISI 316 stainless steel depending on the material to be transported.

Benefits:

- Excellent material extraction without jamming
- Very low maintenance costs
- Design dedicated to customer specifications



CODE DEFINITION

TYPE	/	Spiral Diameter	/	SINGLE Spiral shaft	-	Case internal length	-	Equipment compatible with 2014/34/EU ATEX [a]
S C E	/	3 0 0	/	S	-	5 0 0 0	-	A T 2 2

[a]: AT22 = Area classified ATEX zone 22
 = Unclassified area (Omit)

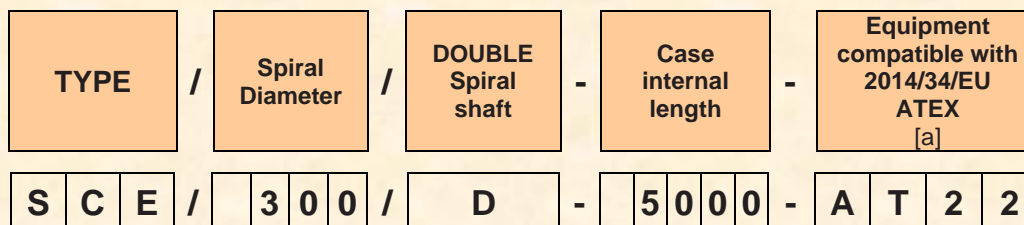
TYPE "S"	Spiral Diameter	Case internal length		Capacity [b]		Installed power [b]	
	[mm]	[mm]		[m³/h]		[kW]	
		Min	Max	Min	Max	Min	Max
SCE/150/S/.....	150	1.000	3.500	1,5	18	0,55	5,5
SCE/200/S/....	200	1.000	4.500	4,2	30	1,1	11,0
SCE/250/S/....	250	1.000	5.000	8,5	90	1,5	18,5
SCE/300/S/....	300	1.000	6.000	14,5	150	2,2	30,0
SCE/350/S/....	350	1.000	6.000	24	200	3,0	45,0
SCE/400/S/....	400	1.000	8.000	35	250	5,5	45,0
SCE/450/S/....	450	1.000	8.000	50	300	7,5	45,0
SCE/500/S/....	500	1.000	8.000	70	350	9,2	55,0
SCE/550/S/....	550	2.000	9.000	100	400	11,0	55,0
SCE/600/S/....	600	2.000	10.000	120	450	15,0	75,0
SCE/650/S/....	650	3.000	10.000	160	500	18,5	75,0
SCE/700/S/....	700	3.000	12.000	200	550	22,0	75,0
SCE/750/S/....	750	3.000	12.000	250	610	30,0	90,0
SCE/800/S/....	800	3.000	12.000	300	750	30,0	90,0
SCE/900/S/....	900	3.000	12.000	420	850	37,0	110,0
SCE/1000/S/....	1.000	5.000	12.000	580	950	55,0	110,0
SCE/1200/S/....	1.200	5.000	12.000	680	1.350	55,0	150,0

[b]: Calculation carried out with material density 180 kg/m³ and humidity 100%

The capacity and power data are indicative but allow you to quickly identify the machine size closest to the transport needs. The exact calculations of flow rate and power will be made in the offer phase according to the required application.

Example for order: **SCE/300/S-5000-AT22**

CODE DEFINITION



[a]: AT22 = Area classified ATEX zone 22
 = Unclassified area (Omit)

TYPE "D"	Spiral Diameter	Case internal length		Capacity [b]		Installed power [b]	
	[mm]	[mm]		[m³/h]		[kW]	
		Min	Max	Min	Max	Min	Max
SCE/150/D/....	150	1.000	3.500	3	36	2x0,55	2x5,5
SCE/200/D/....	200	1.000	4.500	8,4	60	2x1,1	2x11,0
SCE/250/D/....	250	1.000	5.000	17	180	2x1,5	2x18,5
SCE/300/D/....	300	1.000	6.000	29	300	2x2,2	2x30,0
SCE/350/D/....	350	1.000	6.000	48	400	2x3,0	2x45,0
SCE/400/D/....	400	1.000	8.000	70	500	2x5,5	2x45,0
SCE/450/D/....	450	1.000	8.000	100	600	2x7,5	2x45,0
SCE/500/D/....	500	1.000	8.000	140	700	2x9,2	2x55,0
SCE/550/D/....	550	2.000	9.000	200	800	2x11,0	2x55,0
SCE/600/D/....	600	2.000	10.000	240	900	2x15,0	2x75,0
SCE/650/D/....	650	3.000	10.000	320	1.000	2x18,5	2x75,0
SCE/700/D/....	700	3.000	12.000	400	1.100	2x22,0	2x75,0
SCE/750/D/....	750	3.000	12.000	500	1.220	2x30,0	2x90,0
SCE/800/D/....	800	3.000	12.000	600	1.500	2x30,0	2x90,0

[b]: Calculation carried out with material density 180 kg/m³ and humidity 100%

The capacity and power data are indicative but allow you to quickly identify the machine size closest to the transport needs. The exact calculations of flow rate and power will be made in the offer phase according to the required application.

Example for order: **SCE/300/D-5000-AT22**

CODE DEFINITION



[a]: AT22 = Area classified ATEX zone 22
 = Unclassified area (Omit)

TYPE "T"	Spiral Diameter	Case internal length		Capacity [b]		Installed power [b]	
	[mm]	[mm]		[m ³ /h]		[kW]	
		Min	Max	Min	Max	Min	Max
SCE/150/T/....	150	1.000	3.500	4,5	54	3x0,55	3x5,5
SCE/200/T/....	200	1.000	4.500	12,6	90	3x1,1	3x11,0
SCE/250/T/....	250	1.000	5.000	25,5	270	3x1,5	3x18,5
SCE/300/T/....	300	1.000	6.000	43,5	450	3x2,2	3x30,0
SCE/350/T/....	350	1.000	6.000	72	600	3x3,0	3x45,0
SCE/400/T/....	400	1.000	8.000	175	750	3x5,5	3x45,0
SCE/450/T/....	450	1.000	8.000	150	900	3x7,5	3x45,0
SCE/500/T/....	500	1.000	8.000	210	1.050	3x9,2	3x55,0
SCE/550/T/....	550	2.000	9.000	300	1.200	3x11,0	3x55,0
SCE/600/T/....	600	2.000	10.000	360	1.350	3x15,0	3x75,0
SCE/650/T/....	650	3.000	10.000	480	1.500	3x18,5	3x75,0
SCE/700/T/....	700	3.000	12.000	600	1.650	3x22,0	3x75,0
SCE/750/T/....	750	3.000	12.000	750	1.830	3x30,0	3x90,0
SCE/800/T/....	800	3.000	12.000	900	2.250	3x30,0	3x90,0

[b]: Calculation carried out with material density 180 kg/m³ and humidity 100%

The capacity and power data are indicative but allow you to quickly identify the machine size closest to the transport needs. The exact calculations of flow rate and power will be made in the offer phase according to the required application.

Example for order: **SCE/300/T-5000-AT22**

CODE DEFINITION

TYPE	/	Spiral Diameter	/	QUADRUPLE Spiral shaft	-	Case internal length	-	Equipment compatible with 2014/34/EU ATEX [a]
S C E	/	3 0 0	/	Q	-	5 0 0 0	-	A T 2 2

[a]: AT22 = Area classified ATEX zone 22
 = Unclassified area (Omit)

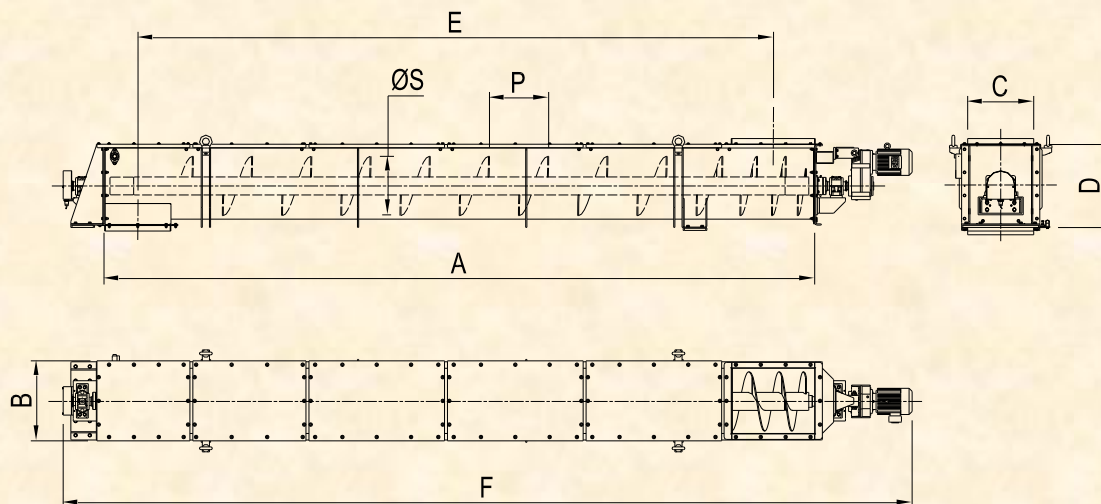
TYPE "Q"	Spiral Diameter	Case internal length		Capacity [b]		Installed power [b]	
	[mm]	[mm]		[m ³ /h]		[kW]	
		Min	Max	Min	Max	Min	Max
SCE/150/Q/....	150	1.000	3.500	6	72	4x0,55	4x5,5
SCE/200/Q/....	200	1.000	4.500	16,8	120	4x1,1	4x11,0
SCE/250/Q/....	250	1.000	5.000	34	360	4x1,5	4x18,5
SCE/300/Q/....	300	1.000	6.000	58	600	4x2,2	4x30,0
SCE/350/Q/....	350	1.000	6.000	96	800	4x3,0	4x45,0
SCE/400/Q/....	400	1.000	8.000	140	1.000	4x5,5	4x45,0
SCE/450/Q/....	450	1.000	8.000	200	1.200	4x7,5	4x45,0
SCE/500/Q/....	500	1.000	8.000	280	1.400	4x9,2	4x55,0
SCE/550/Q/....	550	2.000	9.000	400	1.600	4x11,0	4x55,0
SCE/600/Q/....	600	2.000	10.000	480	1.800	4x15,0	4x75,0
SCE/650/Q/....	650	3.000	10.000	640	2.000	4x18,5	4x75,0
SCE/700/Q/....	700	3.000	12.000	800	2.200	4x22,0	4x75,0
SCE/750/Q/....	750	3.000	12.000	1.000	2.440	4x30,0	4x90,0
SCE/800/Q/....	800	3.000	12.000	1.200	3.000	4x30,0	4x90,0

[b]: Calculation carried out with material density 180 kg/m³ and humidity 100%

The capacity and power data are indicative but allow you to quickly identify the machine size closest to the transport needs. The exact calculations of flow rate and power will be made in the offer phase according to the required application.

Example for order: **SCE/300/Q-5000-AT22**

SCREW EXTRACTION MODEL "SCE" - DATA SHEET -



TYPE (All)	OVERALL DIMENSIONS [mm]							
	Ø S	A	B	C	D	E	F	P
SC/150/....	150							
SC/200/....	200							
SC/250/....	250							
SC/300/....	300							
SC/350/....	350							
SC/400/....	400							
SC/450/....	450							
SC/500/....	500							
SC/550/....	550							
SC/600/....	600							
SC/650/....	650							
SC/700/....	700							
SC/750/....	750							
SC/800/....	800							
SC/900/....	900							
SC/1000/....	1.000							
SC/1200/....	1.200							

DIMENSIONS ACCORDING TO THE SYSTEM LAYOUT